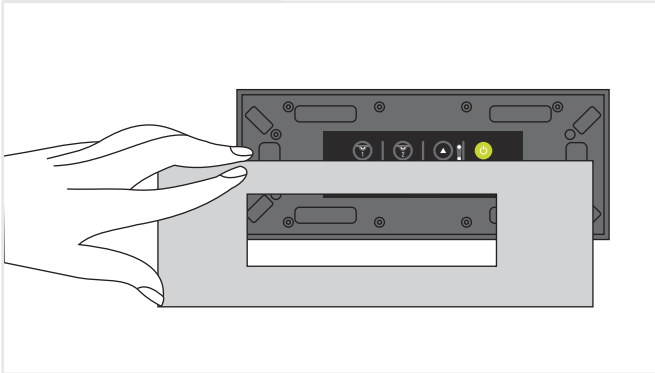


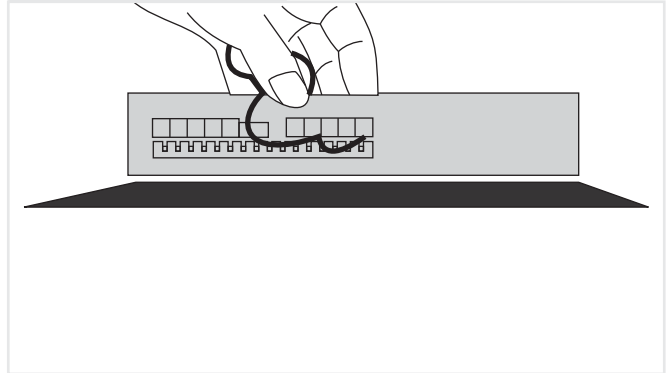
## Installation Guidelines

### STEP 1



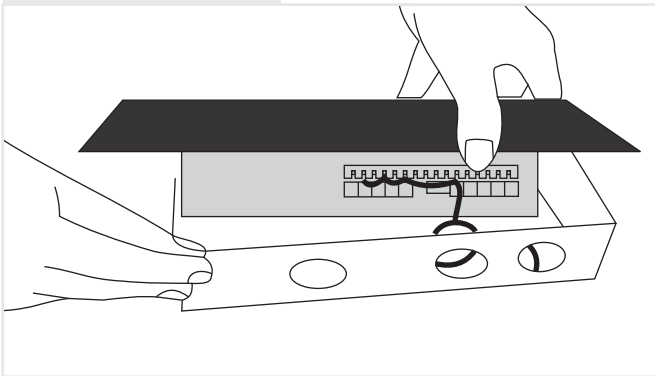
Remove the top black plate from the switch board.

### STEP 2



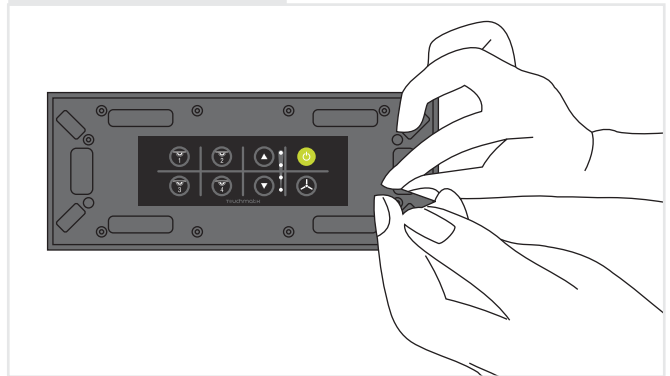
Strip off 10 mm (approx 1 cm ) of the load wire ends that are to be connected. Note that excess stripping will lead to shorts between two wires. Connect the load wires as per the stickers mentioned on the box. Ensure that there are no wire strands protruding outside the connectors.

### STEP 3



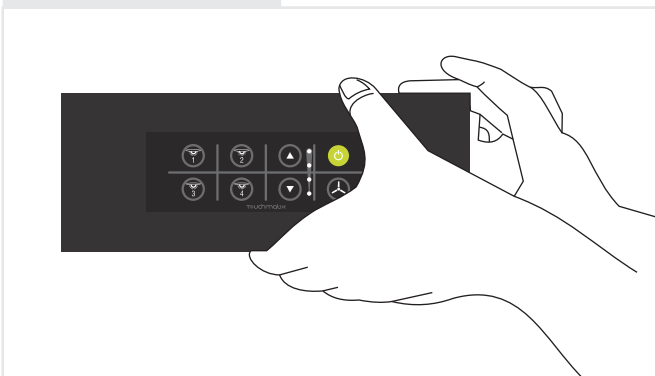
Align the loose cables in the concealed box properly. Place the switch board over the conceal box.

### STEP 4



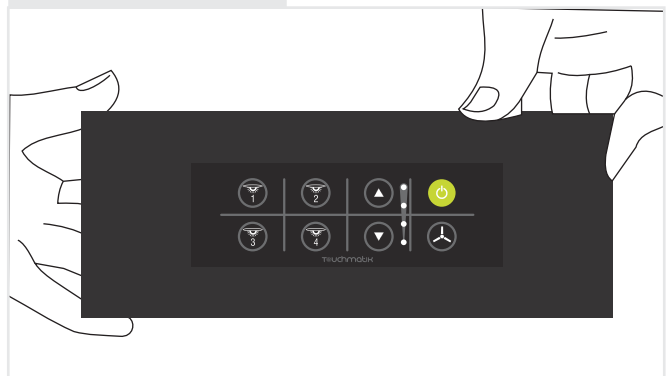
Screw fit the switch board to the conceal box (use the screws provided along with the switch board). Ensure that there is no stress on the load wire connections and the box fitment.

### STEP 5



Check the whole assembly by switching on the loads one by one. Press Fit the top black cover plate to the switch board.

### STEP 6



Ensure proper fitment of the switch board vertically and horizontally. Check the whole switch board functionally. Check the switch board for Remote operation if applicable.